

Private Property Plantations in the Landscape in Tasmania as at 31 December 2006



Private Forests Tasmania
Information Paper No.1

June 2007

ISSN 1834-9129

Preferred citation

“Private Property Plantations in the Landscape in Tasmania as at 31 December 2006’. Private Forests Tasmania Information Paper No. 1 June 2007, Private Forests Tasmania.

Private Forests Tasmania Information Papers are occasional publications providing factual information about the private forests estate in Tasmania and related matters. The Information Papers are published as source documents, providing data that is reliable and authoritative.

Acknowledgement

Private Forests Tasmania wishes to acknowledge the assistance of the private plantation growers who provided data on their plantation estates.

Disclaimer

This information has been prepared by Private Forests Tasmania. Every reasonable endeavour has been used to ensure that the material was accurate at the time of publication. No legal responsibility can or will be accepted by Private Forests Tasmania for the accuracy, completeness, or relevance of such information to the user’s purpose. Before undertaking any significant forestry project it is recommended that you seek personal professional advice from Private Forests Tasmania on the particular matter.

This document is protected by the provisions of the *Copyright Act 1968 (Cw’lth)*

This work is copyright. Apart from any use permitted under the *Copyright Act 1968*, no part may be reproduced by any process, without prior written permission from Private Forests Tasmania.

Private Property Plantations in the Landscape in Tasmania as at 31 December 2006

| | |
|---|-----------|
| Introduction | 2 |
| 1.0 Forest cover in Tasmania | 3 |
| 1.1 Tasmania's forest estate | |
| 1.2 Plantation forest estate | |
| 1.3 Tasmania's plantation estate in the Australian context | |
| 2.0 Plantations on private property | 4 |
| 2.1 Private plantation estate by establishment year | |
| 2.2 Private plantation estate: previous land cover | |
| 2.3 Private plantations by establishment area | |
| 2.4 Plantations by ownership and management | |
| 2.5 Plantations by property coverage analysis | |
| 2.6 Plantations established on agricultural land | |
| 2.6.1 Plantations on Class 1-3 land | |
| 2.6.2 Plantations on Class 4 land | |
| 3.0 Plantations in Tasmania by local government area | 11 |
| 4.0 Plantation establishment in major water catchments | 15 |

Private Property Plantations in the Landscape in Tasmania as at 31 December 2006

Introduction

Plantations (both hardwood and softwood) are a significant feature in Tasmania's landscape, and have been for almost half a century. Plantations are established for a variety of reasons and deliver a range of products and benefits including:

- Sawn timber production
- Wood fibre and other wood based products
- Shelterbelts for animals and crops
- The provision of multiple environmental benefits through addressing land degradation, salinity and soil erosion
- Generation of biomass
- Storage of carbon

This paper adopts the following definition of plantation used in the National Forestry Inventory *Australia's State of the Forest Report 2003*:

Plantation – Intensively managed stands of trees of either native or exotic species created by the regular placement of seedlings or seeds.

The extent and rate of establishment of Tasmania's private plantation estate attracts the attention of policy makers within Government as well as sectors of the broader and rural communities. It is important that commentary offered on plantations and policies developed in respect of the plantation estate are shaped by the facts. Private Forests Tasmania is a statutory authority established under the *Private Forests Act 1994* and this paper is the result of Private Forests Tasmania undertaking the most comprehensive assessment of the extent, location and nature of the private plantation estate in Tasmania.

The paper presents facts about Tasmania's private plantation estate. It does not provide any interpretation of the data presented. The paper is intended to be a source document to which interested parties may refer and to which they can turn in the knowledge that the data contained is both reliable and authoritative.

In this paper, the private plantation estate means plantations by private land tenure, not tree ownership. In other words, the data

is for those plantations established on privately owned land, and it therefore includes a very small component of plantations (<1,000 hectares) established by and managed by Forestry Tasmania on private land. In this paper, the private plantation estate does not include plantations on parcels of State forest land for which Forestry Tasmania holds freehold title, plantations managed by private individuals or companies established on state forest or other publicly owned land or the softwood plantation estate managed by Taswood Growers, the joint venture established by Forestry Tasmania and GMO Resources and managed by Rayonier, as these plantations are established on publicly owned land.

Where a percentage figure is given, it is rounded to the nearest decimal point, with rounding down where a decimal figure is 1 – 4 inclusive and up where the decimal figure is 5 – 9 inclusive. For example, both 4.25 and 4.26 are rounded to 4.3 whereas 4.24 is rounded to 4.2.

The private plantation estate in Tasmania as at 31 December 2006 is 150,407 hectares. The addition of figures in some Tables in the paper may result in a slightly different total as the result of rounding, which also accounts for very minor differences in totals recorded in some Tables and between some Tables. For example, Tables 3 and 5 result in total plantation figures of 150,407 ha and 150,405 ha respectively.

Data in the tables in respect of plantations on private land is at 31 December 2006; all other data is as at 30 June 2006. The area of plantation quoted is nett area, that is, the actual area planted to trees. Surrounding and within a plantation there are roads and other areas not planted to trees and together with the actual area planted is often referred to as the gross plantation area. The accuracy of the net area estimate is deemed to be good with the net area measured using global position systems, aerial photography, satellite imagery or a combination of two or more methodologies.

The terms softwood and hardwood plantation are used throughout this paper. The term softwood plantation refers to plantations of conifer species, the vast majority being *Pinus radiata*. There are smaller areas of other *Pinus* and *Cypress* species. Hardwood plantations primarily consist of *Eucalyptus globulus* (Tasmanian Blue Gum) and *E. nitens* (Shining Gum) plantings and also include very small areas of other *Eucalyptus* species and *Acacia melanoxylon* (Blackwood).

Private Property Plantations in the Landscape in Tasmania as at 31 December 2006

1.0 Forest cover in Tasmania

Tasmania has a landmass of 6,852,000 hectares, of which approximately 3,389,200 hectares (49.5% of the state's landmass) is covered by forest. The forest estate can be broadly split into two categories – native forest and plantation forest.

Tasmania's native forest estate totals 3,135,000 hectares and the plantation estate 254,207 hectares.

1.1 Tasmania's forest estate

Tasmania's forest estate can be classified into the following broad categories:

Table 1 – Tasmania's forest estate

| Forest Category | Total area (hectares) | % of total forest cover | % of total landmass |
|--|-----------------------|-------------------------|---------------------|
| Publicly owned multiple-use native forests | 1,128,000 | 33.3 | 16.5 |
| Publicly owned native forests in reserves | 1,122,000 | 33.1 | 16.4 |
| Privately owned native forest | 885,000 | 26.1 | 12.9 |
| Plantation forests on state forest | 102,000 | 3.0 | 1.5 |
| Plantations on other public land | 1,800 | 0.1 | 0.0 |
| Plantation forests on private land | 150,407 | 4.4 | 2.2 |
| Total | 3,389,207 | 100 | 49.5 |

Sources: *Australia's forests at a glance 2007* (Bureau of Rural Sciences, 2007) and *Sustainability Indicators for Tasmanian Forests 2001 – 2006* (www.dpac.tas.gov.au) except the figure for plantation forests on private land which is produced by *Private Forests Tasmania* based on area update information from industrial plantation companies and GIS analysis of the plantations on private property undertaken in the period March - May 2007.

1.2 Plantation forest estate

Tasmania's plantation forest estate of 254,207 hectares can be classified into the following broad categories:

Table 2 – Tasmania's plantation forest estate

| Forest Category | Total area (hectares) | % of total plantation area | % of total forest cover | % of total landmass |
|--------------------------------------|-----------------------|----------------------------|-------------------------|---------------------|
| Plantations on state forest | 102,000 | 40.1 | 3.0 | 1.5 |
| Plantations on other public land | 1,800 | 0.7 | 0.1 | 0.0 |
| Hardwood plantations on private land | 129,853 | 51.1 | 3.8 | 1.9 |
| Softwood plantations on private land | 20,554 | 8.1 | 0.6 | 0.3 |
| Total | 254,207 | 100.0 | 7.5 | 3.7 |

Tasmania's private plantation estate is 150,407 hectares and covers 2.2% of Tasmania's landmass.

1.3 Tasmania's plantation estate in the Australian context

Following are some brief comparative facts about Tasmania's plantation estate¹:

- Tasmania has 13.9% of Australia's total plantation estate (this includes plantations on both public and private land). The private plantation sector in Tasmania has 8.2% of Australia's total plantation estate
- The proportion of Tasmania's plantation estate on private land is 59.2% – the highest of all states and territories in Australia
- Plantations established in Tasmania in 2006 represent 28.9% of plantations established in Australia in 2006
- Plantations established in Tasmania over the period 2001 – 2006 represent 21% of all plantations established in Australia during that period

¹Source: Based on data contained in *Australia's Plantations 2007* (Bureau of Rural Sciences) and the updated data on the private plantation estate in this paper. The NPI records that plantations established in Tasmania in 2006 accounted for 26% of all plantations established in Australia in 2006. However, that calculation was based on a lower estimate of plantations established in Tasmania in 2006, so the figure has been recalculated on the basis of the updated figure for new plantations established on private land in Tasmania in 2006 contained in this paper.

Private Property Plantations in the Landscape in Tasmania as at 31 December 2006

2.0 Plantations on private property

2.1 Private plantation estate by establishment year

Table 3 indicates the area of plantations established in Tasmania on privately owned land over each of the past five years and cumulatively pre-December 31, 2001.

Table 4 indicates the establishment of plantations in Tasmania on privately owned land over each of the past five years and cumulatively pre-December 31, 2001 as a proportion of the total private plantation estate of 150,407 hectares.



Table 3 – Private plantation estate by establishment year

| | Pre 31 Dec 2001 | 2002 | 2003 | 2004 | 2005 | 2006 | Unknown age | Total |
|-----------------------------|-----------------|--------------|--------------|--------------|---------------|---------------|--------------|----------------|
| Hardwood plantations | 69,640 | 7,732 | 8,832 | 9,757 | 10,263 | 21,075 | 1,880 | 129,178 |
| Softwood plantations | 16,976 | 273 | 79 | 152 | 282 | 2,442 | 351 | 20,555 |
| Plantation species unknown | 6 | | | | | | 668 | 674 |
| Plantation sub-total | 86,622 | 8,004 | 8,910 | 9,909 | 10,545 | 23,517 | 2,899 | 150,407 |

Table 4 – Private plantation estate by establishment year as percentage of total private plantation estate

| | Pre 31 Dec 2001 | 2002 | 2003 | 2004 | 2005 | 2006 | TOTAL |
|----------------------|-----------------|------------|------------|------------|------------|-------------|------------|
| Hardwood plantations | 48.0 | 5.1 | 5.8 | 6.5 | 6.8 | 14.0 | 86.3 |
| Softwood plantations | 11.5 | 0.2 | 0.1 | 0.1 | 0.2 | 1.6 | 13.7 |
| Total | 59.5 | 5.3 | 5.9 | 6.6 | 7.0 | 15.6 | 100 |

Private Property Plantations in the Landscape in Tasmania as at 31 December 2006

2.2 Private plantation estate: previous land cover

Tables 5 sets out the extent to which plantations have been established on converted native forest, established on land that had previously been cleared and was not under forest cover, or established on land that was previously under plantation.

In Tables 5 and 6, converted native forest means any land that was native forest in the 3 years prior to the establishment of the plantation. Thus, a plantation established in 2005 on land that was native forest in 2002 is classified as being established on converted native forest, whereas a plantation established in 2005 on land that was cleared of native forest in 2001 or earlier is classified as being established on cleared land.

Table 5 – Plantations established and previous land cover

| PLANTATION TYPE | AREA (HECTARES) | | | | | | |
|---|-----------------|-------------------------|--------------|--------------|---------------|---------------|----------------|
| | Pre 1995 | 1995 – 31 December 2002 | 2003 | 2004 | 2005 | 2006 | TOTAL |
| Hardwood (Converted Native Forest) | N/A | 23,123 | 4,311 | 3,039 | 3,018 | 3,428 | 36,919 |
| Hardwood (Cleared Land) | N/A | 25,088 | 1,148 | 3,543 | 6,222 | 16,031 | 52,032 |
| Hardwood (Replanting on plantation area) | 19,684 | 9,412 | 3,362 | 3,156 | 1,022 | 1,616 | 38,252 |
| Softwood (Converted Native Forest) | N/A | 1,953 | 26 | 1 | 9 | 490 | 2,479 |
| Softwood (Cleared Land) | N/A | 3,242 | 43 | 131 | 230 | 1,465 | 5,111 |
| Softwood (Replanting on plantation area) | 11,353 | 674 | 10 | 20 | 44 | 487 | 12,588 |
| Plantation age or species or previous forest type unknown | 2,906 | 88 | 11 | 18 | 0 | 0 | 3,023 |
| Total | 33,943 | 63,580 | 8,911 | 9,908 | 10,545 | 23,517 | 150,405 |

N/A – Data is not available.

Private Property Plantations in the Landscape in Tasmania as at 31 December 2006

Table 6 – Plantations established and previous land cover (proportion of total private plantations)

| PLANTATION TYPE | % OF TOTAL PRIVATE PLANTATION ESTATE | | | | | | TOTAL |
|---|--------------------------------------|-------------------------|------------|------------|------------|-------------|--------------|
| | Pre 1995 | 1995 – 31 December 2002 | 2003 | 2004 | 2005 | 2006 | |
| Hardwood (Converted Native Forest) | N/A | 15.4 | 2.9 | 2.0 | 2.0 | 2.3 | 24.7 |
| Hardwood (Cleared Land) | N/A | 16.9 | 0.8 | 2.4 | 4.1 | 10.7 | 34.9 |
| Hardwood (Replanting on plantation area) | 13.1 | 6.3 | 2.2 | 2.1 | 0.7 | 1.1 | 25.5 |
| Softwood (Converted Native Forest) | N/A | 1.3 | 0.0 | 0.0 | 0.0 | 0.3 | 1.6 |
| Softwood (Cleared Land) | N/A | 2.2 | 0.0 | 0.1 | 0.2 | 1.0 | 3.5 |
| Softwood (Replanting on plantation area) | 7.5 | 0.4 | 0.0 | 0.0 | 0.0 | 0.3 | 8.2 |
| Plantation age or species or previous forest type unknown | 1.9 | 0.1 | 0.0 | 0.0 | 0.0 | 0.0 | 2.0 |
| Total | 22.5 | 42.6 | 5.9 | 6.6 | 7.0 | 15.7 | 100.0 |

N/A – Data is not available.

Note: Due to rounding to the nearest 0.1, the totals on the bottom line when added add up to 100.3% and when the totals in the right hand column are added they add up to 100.4%. These rounding factors are not significant.

Private Property Plantations in the Landscape in Tasmania as at 31 December 2006

2.3 Private plantations by establishment area

Plantations on private land are integrated into a broader landscape and Table 7 indicates the relative proportion of plantations of differing sizes. Approximately one-third of all plantations on private land in Tasmania are less than 30 hectares in area and approximately one-quarter of all plantations on private land are less than 20 hectares in area.

Table 7 – Private plantations by establishment area

| Area of Plantation | Total Area | % of plantation area |
|--------------------|----------------|----------------------|
| 0 - 5 hectares | 5,978 | 4.0% |
| 5 - 10 hectares | 7,509 | 5.0% |
| 10 - 20 hectares | 19,451 | 12.9% |
| 20 - 30 hectares | 16,268 | 10.8% |
| 30+ hectares | 101,201 | 67.3% |
| | 150,407 | 100.0% |

2.4 Plantations by ownership and management

Plantations on private land are either managed by the owner of the land on which they are established or are managed by a second party on land that is leased or subject to a joint venture agreement. Table 8 shows plantation area managed by the owner of the land on which a plantation is established or managed by a party under a lease arrangement with the land owner.



Table 8 – Plantations on private land by land ownership and management

| Hardwood | Age not known | Pre 31 Dec 2002 | 2003 | 2004 | 2005 | 2006 | Total |
|--------------------|---------------|-----------------|-------|-------|-------|--------|----------------|
| Manager is owner | 2548 | 61,192 | 6,942 | 6,007 | 6,391 | 15,767 | 98,847 |
| Manager is leasing | 0 | 16,110 | 1,884 | 3,748 | 3,870 | 5,307 | 30,919 |
| Softwood | Age not known | Pre 31 Dec 2002 | 2003 | 2004 | 2005 | 2006 | |
| Manager is owner | 351 | 15,391 | 79 | 151 | 282 | 883 | 17,138 |
| Manager is leasing | 0 | 1,856 | 0 | 1 | 0 | 1,559 | 3,415 |
| | | | | | | | 150,318 |
| | | | | | | | 89 |
| | | | | | | | 150,407 |

Difference in area is due to two separate owners claiming part or all of same titles

Total private plantation area

Note: For the purposes of Table 8, plantations established on land identified as leased by the plantation manager also includes land where the manager is in a joint venture arrangement but may not have a lease over the land on which the plantation is established.

Private Property Plantations in the Landscape in Tasmania as at 31 December 2006

2.5 Plantations by property coverage analysis

Plantations are integrated into a wider property context to some degree or another. In some cases, a plantation occupies as great a proportion of a property as geography and the Forest Practices Code will permit, while in other cases plantations are only one of a number of primary production pursuits on the property.

A property is an area of land, comprising one or more titles, identified in the land information system Tasmania (LIST) as a single unit for rating and valuation purposes. An individual agricultural operation may be pursued solely on a single property as identified on the LIST, but it is also possible that a number of properties as identified in the LIST are managed for primary production as a single unit. An individual, partnership or company may own more than one property in the same location or on a statewide basis.

There are 4,853 private properties in Tasmania with plantations, with 81% of these properties having plantation cover less than 50% of the property area. There are 2,825 properties (58.2% of the total number of private properties with plantations) where the plantation cover is 10% or less of the property.

Graph 1 – Plantation as proportion of property

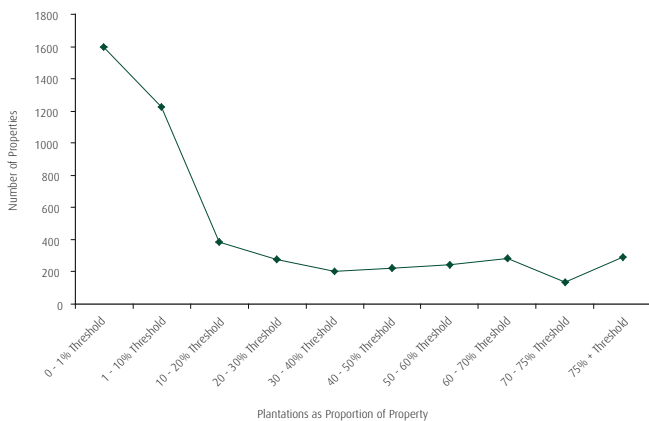


Table 9 shows the number of properties where the plantation area constitutes more than or less than 50% of the property area while Table 10 shows the distribution of the number of plantations by plantation coverage of the property in 10 percentile groupings.

Graph 1 shows the distribution of the number of plantations by plantation coverage of the property in 10 percentile groupings.

Table 9 – Plantations on private property by proportion of property cover

| Property Type | Number of properties with plantation | Area of plantation (hectares) | % Of properties with plantations | % Of total plantation area |
|--|--------------------------------------|-------------------------------|----------------------------------|----------------------------|
| Plantations on land not allocated a property identification number | Unknown | 3,568 | Unknown | 2.4% |
| Property with >50% plantation | 943 | 75,373 | 19.4% | 50.1% |
| Property with <50% plantation | 3,910 | 71,466 | 80.6% | 47.5% |
| Total | 4,853 | 150,407 | 100.00% | 100.00% |

Table 10 – Plantations on private property by proportion of property cover

| Threshold | Number of properties |
|--------------------|----------------------|
| 0 - 1% Threshold | 1599 |
| 1 - 10% Threshold | 1226 |
| 10 - 20% Threshold | 387 |
| 20 - 30% Threshold | 277 |
| 30 - 40% Threshold | 201 |
| 40 - 50% Threshold | 220 |
| 50 - 60% Threshold | 241 |
| 60 - 70% Threshold | 282 |
| 70 - 75% Threshold | 132 |
| 75% + Threshold | 288 |
| Total | 4853 |

Private Property Plantations in the Landscape in Tasmania as at 31 December 2006

2.6 Plantations established on agricultural land

The Tasmanian Department of Primary Industry and Water (DPIW)³ uses the Land Capability Classification System (LCCS) to assess, classify and map land according to its ability to support a range of crops on a long term sustainable basis. Land that is assessed as being class 1, 2, 2-3 or 3 is regarded as 'prime agricultural land'. Where land is classified as 3-4, then DPIW allocates 60% of the land as class 3 and 40% of the land as class 4.

As at 31 December 2006, there were 107,005 hectares of land mapped and assessed as Class 1-3 land and 596,104 hectares of land mapped and assessed as Class 4 land.

2.6.1 Plantations on Class 1-3 land

As at 31 December 2006 there were 5,290 hectares of plantations established on land mapped as Class 1-3, representing 3.5% of the total private plantation estate and 4.9% of the total area of 107,005 hectares of land mapped as Class 1-3 land.

In calendar year 2006, there were 226 ha of plantations established on land mapped as Class 1-3 land, representing 1.0% of the private plantation area established in 2006, and covering 0.2% of the total area of land mapped as Class 1-3 land.

Over the five years 2002 to 2006, there were 1,357 hectares of plantations established on land mapped as being Class 1-3 land representing 2.2% of plantations established during that period, and covering 1.3% of the total area of land mapped as Class 1-3 land.

2.6.2 Plantations on Class 4 land

As at 31 December 2006 there were 35,095 hectares of plantations established on land mapped as Class 4, representing 23.3% of the total private plantation estate in Tasmania and 5.9% of the total area of 596,104 hectares of land mapped as Class 4 land.

In calendar year 2006, there were 8,446 hectares of plantations established on land mapped as Class 4 land, representing 35.9% of the private plantation area established in 2006 and covering 1.4% of the total area of land mapped as Class 4 land.

Over the five years 2002 to 2006, there were 16,835 hectares of plantations established on land mapped as being Class 4 land representing 27.7% of plantations established during that period and covering 2.8% of the total area of land mapped as Class 4 land.

Table 11 shows plantation establishment by area on Class 1-3 land on a statewide basis by year of planting.

Table 11 – Plantations established on Class 1-3 land by year of planting (area in hectares)

| | Pre-31 Dec 2001 | 2002 | 2003 | 2004 | 2005 | 2006 | Age unknown | Total |
|---|--------------------|------------|------------|------------|------------|------------|----------------|--------------|
| Total area mapped as Class 1-3 | 107,005 | 107,005 | 107,005 | 107,005 | 107,005 | 107,005 | 107,005 | 107,005 |
| Plantation Type | | | | | | | | |
| Hardwood plantations on Class 1-3 | 3,753 | 359 | 275 | 110 | 217 | 225 | 8 | 4,947 |
| Softwood plantations on Class 1-3 | 180 | 6 | 2 | 2 | 6 | 2 | 6 | 204 |
| Plantation species unknown | 0 | 0 | 0 | 0 | 0 | 0 | 139 | 139 |
| Sub-total of plantations on Class 1-3 land | 3,933 | 366 | 277 | 112 | 223 | 226 | 154 | 5,290 |
| Hardwood plantations as % of Class 1-3 land | 3.5 | 0.3 | 0.3 | 0.1 | 0.2 | 0.2 | 0.0 | 4.6 |
| Softwood plantations as % of Class 1-3 land | 0.2 | 0.0 | 0.0 | 0.0 | 0.0 | 0.0 | 0.0 | 0.2 |
| Unknown Plantations as % of Class 1-3 land | 0.0 | 0.0 | 0.0 | 0.0 | 0.0 | 0.0 | 0.1 | 0.1 |
| Sub-total % of Class 1-3 land | 3.7 | 0.3 | 0.3 | 0.1 | 0.2 | 0.2 | 0.1 | 4.9 |

³The evaluation is based on the degree of limitation imposed on that land by a variety of physical factors which include erosion, soils, wetness and climate. The land is evaluated on the basis of the range of potential crops, productivity, and ease of management and risk of degradation. Only broad acre agricultural crops and pastoral activities are considered, and only where they occur on private freehold and leased Crown land. LCC are deemed to be good indicators of potential cropping and pastoral suitability. More information is available at www.dpiw.tas.gov.au.

Private Property Plantations in the Landscape in Tasmania as at 31 December 2006

Table 12 shows plantations established on Class 1-3 land by year of planting as a percentage of the total statewide private plantation estate.

Table 12 – Plantations established on Class 1-3 land by year of planting (% of the private plantation estate)

| | Pre-31 Dec 2001 | 2002 | 2003 | 2004 | 2005 | 2006 | Age unknown | Total |
|--|--------------------|------------|------------|------------|------------|------------|----------------|------------|
| Hardwood plantations on Class 1-3 as % of plantation area | 2.5 | 0.2 | 0.2 | 0.1 | 0.2 | 0.2 | 0.0 | 3.4 |
| Softwood plantations on Class 1-3 as % of plantation area | 0.1 | 0.0 | 0.0 | 0.0 | 0.0 | 0.0 | 0.0 | 0.1 |
| Unknown plantations on Class 1-3 as % of plantation area | 0.0 | 0.0 | 0.0 | 0.0 | 0.0 | 0.0 | 0.1 | 0.1 |
| Sub-total of plantations on Class 1-3 as % of total private plantation area | 2.6 | 0.2 | 0.2 | 0.1 | 0.2 | 0.2 | 0.1 | 3.6 |

Land classifications based on a 60/40 split. Includes all 1-3 classifications (3+4, 4+3, 3+5 etc)

Table 13 shows plantation establishment by area on Class 4 land on a statewide basis by year of planting.

Table 13 – Plantations established on Class 4 land by year of planting (area in hectares)

| | Pre 31 Dec 2001 | 2002 | 2003 | 2004 | 2005 | 2006 | Unknown age | Total |
|---|--------------------|--------------|--------------|--------------|--------------|--------------|----------------|---------------|
| Total area mapped as Class 4 | 596,104 | 596,104 | 596,104 | 596,104 | 596,104 | 596,104 | 596,104 | 596,104 |
| Plantation Type | | | | | | | | |
| Hardwood plantations on Class 4 land | 14,932 | 2,223 | 2,039 | 1,251 | 2,680 | 7,232 | 366 | 30,723 |
| Softwood plantations on Class 4 land | 2,683 | 128 | 32 | 11 | 23 | 1,214 | 13 | 4,104 |
| Plantation species unknown | 0 | | | | | | 267 | 267 |
| Sub-total of plantations on Class 4 land | 17,615 | 2,351 | 2,072 | 1,263 | 2,703 | 8,446 | 645 | 35,095 |
| Hardwood plantations as % of Class 4 land | 2.5 | 0.4 | 0.3 | 0.2 | 0.5 | 1.2 | 0.1 | 5.2 |
| Softwood plantations as % of Class 4 land | 0.5 | 0.0 | 0.0 | 0.0 | 0.0 | 0.2 | 0.0 | 0.7 |
| Unknown Plantations as % of Class 4 land | 0.0 | 0.0 | 0.0 | 0.0 | 0.0 | 0.0 | 0.0 | 0.0 |
| Sub-total % of Class 4 land | 3.0 | 0.4 | 0.3 | 0.2 | 0.5 | 1.4 | 0.1 | 5.9 |

Private Property Plantations in the Landscape in Tasmania as at 31 December 2006

Table 14 shows plantations established on Class 4 land by year of planting as a percentage of the total statewide private plantation estate.

Table 14 – Plantations established on Class 4 land by year of planting (% of the private plantation estate)

| | Pre-31 Dec 2001 | 2002 | 2003 | 2004 | 2005 | 2006 | Age Unknown | Total |
|--|--------------------|------------|------------|------------|------------|------------|----------------|-------------|
| Hardwood plantations on Class 4 as % of plantation area | 9.9 | 1.5 | 1.4 | 0.8 | 1.8 | 4.8 | 0.2 | 20.4 |
| Softwood plantations on Class 4 as % of plantation area | 1.8 | 0.1 | 0.0 | 0.0 | 0.0 | 0.8 | 0.0 | 2.7 |
| Unknown plantations on Class 4 as % of plantation area | 0.0 | 0.0 | 0.0 | 0.0 | 0.0 | 0.0 | 0.2 | 0.2 |
| Sub-total of plantations on Class 4 as % of total private plantation area | 11.7 | 1.6 | 1.4 | 0.8 | 1.8 | 5.6 | 0.4 | 23.3 |

3.0 Plantations in Tasmania by local government area

Plantations are not distributed evenly throughout the state, nor are they distributed across all land types. The information contained in Tables 15 – 17 indicates the area of private plantations established in each of the local government areas and by distribution across agricultural land mapped as Class 1-3 land and Class 4 land within each local government area.

Private plantations account for 2.2% of Tasmania's landmass.



Private Property Plantations in the Landscape in Tasmania as at 31 December 2006

Table 15 – Plantations in Tasmania by local government area (hectares)

| Local government area | Total local government land area (hectares) | Private property land area in local government area (hectares) | Private plantation area (hectares) | Private plantation area as proportion of local government area | Private plantation area as proportion of total private plantation area in Tasmania |
|---------------------------|---|--|------------------------------------|--|--|
| NORTHWEST | | | | | |
| BURNIE | 61,060 | 50,121 | 15,644 | 25.6% | 10.4% |
| CENTRAL COAST | 93,193 | 53,590 | 5,378 | 5.8% | 3.6% |
| CIRCULAR HEAD | 494,094 | 143,268 | 10,301 | 2.1% | 6.8% |
| DEVONPORT | 11,430 | 10,752 | 40 | 0.3% | 0.0% |
| KENTISH | 116,047 | 54,838 | 7,364 | 6.3% | 4.9% |
| KING ISLAND | 109,879 | 98,190 | 1 | 0.0% | 0.0% |
| LATROBE | 60,708 | 36,240 | 2,038 | 3.4% | 1.4% |
| WARATAH/WYNYARD | 352,916 | 106,379 | 30,515 | 8.6% | 20.3% |
| WEST COAST | 980,689 | 4,551 | 0 | 0.0% | 0.0% |
| Regional sub-total | 2,280,016 | 557,929 | 71,281 | 3.1% | 47.4% |
| NORTHEAST | | | | | |
| BREAK O'DAY | 353,722 | 103,718 | 7,369 | 2.1% | 4.9% |
| DORSET | 324,053 | 155,556 | 10,683 | 3.3% | 7.1% |
| FLINDERS | 200,794 | 86,475 | 252 | 0.1% | 0.2% |
| GEORGE TOWN | 66,406 | 44,089 | 3,322 | 4.9% | 2.2% |
| LAUNCESTON | 142,821 | 95,534 | 10,061 | 7.0% | 6.7% |
| MEANDER VALLEY | 332,748 | 149,056 | 10,933 | 3.3% | 7.3% |
| NORTHERN MIDLANDS | 513,867 | 410,297 | 3,302 | 0.6% | 2.2% |
| WEST TAMAR | 72,102 | 54,840 | 4,052 | 5.6% | 2.7% |
| Regional sub-total | 2,006,153 | 1,099,566 | 49,974 | 2.5% | 33.2% |
| SOUTH | | | | | |
| BRIGHTON | 17,987 | 15,710 | 31 | 0.2% | 0.0% |
| CENTRAL HIGHLANDS | 797,694 | 341,971 | 6,963 | 0.9% | 4.6% |
| CLARENCE | 40,219 | 33,478 | 30 | 0.1% | 0.0% |
| DERWENT VALLEY | 410,461 | 51,879 | 6,301 | 1.5% | 4.2% |
| GLAMORGAN/ SPRING BAY | 264,219 | 137,678 | 2,431 | 0.9% | 1.6% |
| GLENORCHY | 12,432 | 8,221 | 0 | 0.0% | 0.0% |
| HOBART | 7,800 | 6,462 | 1 | 0.0% | 0.0% |
| HUON VALLEY | 554,403 | 77,652 | 4,608 | 0.8% | 3.1% |
| KINGBOROUGH | 73,246 | 49,428 | 136 | 0.2% | 0.1% |
| SORELL | 59,402 | 49,671 | 2,167 | 3.6% | 1.4% |
| SOUTHERN MIDLANDS | 261,326 | 243,888 | 4,425 | 1.7% | 2.9% |
| TASMAN | 66,248 | 35,719 | 2,061 | 3.1% | 1.4% |
| Regional sub-total | 2,565,437 | 1,051,756 | 29,154 | 1.1% | 19.4% |
| Statewide Total | 6,851,969 | 2,709,251 | 150,407 | 2.2% | 100.0% |

Private Property Plantations in the Landscape in Tasmania as at 31 December 2006

Table 16 – Plantations on Class 1-3 mapped land by local government area (hectares)

| Local government area | Total land area | Private Plantation Area | Class 1-3 Land Area | Private Plantation Area on Class 1-3 Land | Private Plantations as Proportion of Class 1-3 Area |
|---------------------------|------------------|-------------------------|---------------------|---|---|
| NORTHWEST | | | | | |
| BURNIE | 61,060 | 15,644 | 7,002 | 670 | 9.6% |
| CENTRAL COAST | 93,193 | 5,378 | 13,453 | 480 | 3.6% |
| CIRCULAR HEAD | 494,094 | 10,301 | 16,697 | 1,667 | 10.0% |
| DEVONPORT | 11,430 | 40 | 2,524 | 4 | 0.2% |
| KENTISH | 116,047 | 7,364 | 7,302 | 540 | 7.4% |
| KING ISLAND | 109,879 | 1 | 0 | 0 | 0.0% |
| LATROBE | 60,708 | 2,038 | 7,868 | 35 | 0.4% |
| WARATAH/WYNYARD | 352,916 | 30,515 | 11,038 | 1,026 | 9.3% |
| WEST COAST | 980,689 | 0 | 0 | 0 | 0.0% |
| Regional sub-total | 2,280,016 | 71,281 | 65,884 | 4,422 | 6.7% |
| NORTHEAST | | | | | |
| BREAK O'DAY | 353,722 | 7,369 | 0 | 0 | 0.0% |
| DORSET | 324,053 | 10,683 | 10,265 | 326 | 3.2% |
| FLINDERS | 200,794 | 252 | 0 | 0 | 0.0% |
| GEORGE TOWN | 66,406 | 3,322 | 1,235 | 16 | 1.3% |
| LAUNCESTON | 142,821 | 10,061 | 645 | 29 | 4.5% |
| MEANDER VALLEY | 332,748 | 10,933 | 18,941 | 464 | 2.5% |
| NORTHERN MIDLANDS | 513,867 | 3,302 | 9,234 | 35 | 0.4% |
| WEST TAMAR | 72,102 | 4,052 | 223 | 0 | 0.0% |
| Regional sub-total | 2,006,153 | 49,974 | 40,543 | 870 | 2.2% |
| SOUTH | | | | | |
| BRIGHTON | 17,987 | 31 | 0 | 0 | 0.0% |
| CENTRAL HIGHLANDS | 797,694 | 6,963 | 0 | 0 | 0.0% |
| CLARENCE | 40,219 | 30 | 0 | 0 | 0.0% |
| DERWENT VALLEY | 410,461 | 6,301 | 0 | 0 | 0.0% |
| GLAMORGAN/ SPRING BAY | 264,219 | 2,431 | 0 | 0 | 0.0% |
| GLENORCHY | 12,432 | 0 | 0 | 0 | 0.0% |
| HOBART | 7,800 | 1 | 0 | 0 | 0.0% |
| HUON VALLEY | 554,403 | 4,608 | 45 | 0 | 0.0% |
| KINGBOROUGH | 73,246 | 136 | 196 | 0 | 0.0% |
| SORELL | 59,402 | 2,167 | 263 | 0 | 0.0% |
| SOUTHERN MIDLANDS | 261,326 | 4,425 | 72 | 0 | 0.0% |
| TASMAN | 66,248 | 2,061 | 0 | 0 | 0.0% |
| Regional sub-total | 2,565,437 | 29,154 | 576 | 0 | 0.0% |
| Statewide total | 6,851,969 | 150,407 | 107,005 | 5,290 | 4.9% |

Private Property Plantations in the Landscape in Tasmania as at 31 December 2006

Table 17 – Plantations on Class 4 land by local government area

| Local government area | Total land area (hectares) | Private plantation area (hectares) | Class 4 land area (hectares) | Private plantations on Class 4 land (hectares) | Private plantations as proportion of Class 4 land |
|---------------------------|----------------------------|------------------------------------|------------------------------|--|---|
| NORTHWEST | | | | | |
| BURNIE | 61,060 | 15,644 | 13,585 | 5,014 | 36.9% |
| CENTRAL COAST | 93,193 | 5,378 | 19,322 | 1,642 | 8.5% |
| CIRCULAR HEAD | 494,094 | 10,301 | 19,481 | 1,613 | 8.3% |
| DEVONPORT | 11,430 | 40 | 3,240 | 17 | 0.5% |
| KENTISH | 116,047 | 7,364 | 19,970 | 3,541 | 17.7% |
| KING ISLAND | 109,879 | 1 | 0 | 0 | 0.0% |
| LATROBE | 60,708 | 2,038 | 12,783 | 519 | 4.1% |
| WARATAH/WYNYARD | 352,916 | 30,515 | 12,384 | 2,743 | 22.1% |
| WEST COAST | 980,689 | 0 | 0 | 0 | 0.0% |
| Regional sub-total | 2,280,017 | 71,280 | 100,764 | 15,088 | 15.0% |
| NORTHEAST | | | | | |
| BREAK O'DAY | 353,722 | 7,369 | 23,131 | 2,953 | 12.8% |
| DORSET | 324,053 | 10,683 | 32,193 | 3,282 | 10.2% |
| FLINDERS | 200,794 | 252 | 0 | 0 | 0.0% |
| GEORGE TOWN | 66,406 | 3,322 | 18,670 | 1,606 | 8.6% |
| LAUNCESTON | 142,821 | 10,061 | 27,952 | 3,942 | 14.1% |
| MEANDER VALLEY | 332,748 | 10,933 | 73,017 | 3,660 | 5.0% |
| NORTHERN MIDLANDS | 513,867 | 3,302 | 159,623 | 946 | 0.6% |
| WEST TAMAR | 72,102 | 4,052 | 25,496 | 1,093 | 4.3% |
| Regional sub-total | 2,006,513 | 49,975 | 360,082 | 17,483 | 4.9% |
| SOUTH | | | | | |
| BRIGHTON | 17,987 | 31 | 4,781 | 14 | 0.3% |
| CENTRAL HIGHLANDS | 797,694 | 6,963 | 28,915 | 500 | 1.7% |
| CLARENCE | 40,219 | 30 | 9,930 | 0 | 0.0% |
| DERWENT VALLEY | 410,461 | 6,301 | 5,601 | 25 | 0.5% |
| GLAMORGAN/ SPRING BAY | 264,219 | 2,431 | 25,768 | 862 | 3.3% |
| GLENORCHY | 12,432 | 0 | 372 | 0 | 0.0% |
| HOBART | 7,800 | 1 | 21 | 0 | 0.0% |
| HUON VALLEY | 554,403 | 4,608 | 2,600 | 12 | 0.5% |
| KINGBOROUGH | 73,246 | 136 | 1,009 | 0 | 0.0% |
| SORELL | 59,402 | 2,167 | 10,446 | 76 | 0.7% |
| SOUTHERN MIDLANDS | 261,326 | 4,425 | 45,637 | 1,029 | 2.3% |
| TASMAN | 66,248 | 2,061 | 178 | 6 | 3.1% |
| Regional sub-total | 2,565,438 | 29,152 | 135,258 | 2,524 | 1.9% |
| Statewide Total | 6,851,969 | 150,407 | 596,104 | 35,095 | 5.9% |

Private Property Plantations in the Landscape in Tasmania as at 31 December 2006

4.0 Plantation establishment in major water catchments

Plantations are established in many different parts of the landscape, and there is interest in understanding more about where plantations are located, most notably in respect of their establishment in water catchments. Table 18 shows private plantation establishment (combined hardwood and softwood) by area in each of 43 major water catchments in Tasmania. Catchments with no area of private plantations in the catchment are not included. The catchments are listed in alphabetical order on a statewide basis and cover approximately 82% of Tasmania's land mass.

Table 18 – Plantations on private land by catchment areas

| Catchment name | Catchment area (hectares) | Private property area (hectares) | Plantation area on private property (hectares) | Plantation on private land as proportion of total catchment area |
|-----------------------|---------------------------|----------------------------------|--|--|
| Arthur | 251,865 | 41,498 | 17,378 | 6.9% |
| Black-Detention | 65,639 | 23,861 | 1,821 | 2.8% |
| Blythe | 37,320 | 22,260 | 2,741 | 7.3% |
| Boobyalla-Tomahawk | 64,479 | 33,464 | 1,258 | 1.9% |
| Brumbys-Lake | 148,248 | 95,426 | 969 | 0.6% |
| Cam ⁴ | 29,219 | 26,836 | 8,039 | 27.5% |
| Clyde | 113,015 | 100,710 | 1,789 | 1.6% |
| Derwent Estuary-Bruny | 127,395 | 79,218 | 170 | 0.1% |
| Duck | 55,721 | 40,657 | 3,638 | 6.5% |
| Emu | 24,983 | 20,207 | 6,602 | 26.4% |
| Forth-Wilmot | 117,897 | 35,256 | 4,005 | 3.4% |
| Furneaux | 201,758 | 85,395 | 252 | 0.1% |
| George | 62,478 | 18,150 | 2,301 | 3.7% |
| Great Forester-Brid | 78,842 | 41,065 | 3,002 | 3.8% |
| Huon | 391,432 | 80,376 | 4,601 | 1.2% |
| Inglis | 61,286 | 41,290 | 6,866 | 11.2% |
| Jordan | 125,334 | 118,143 | 1,784 | 1.4% |
| King Island | 109,672 | 98,115 | 1 | 0.0% |
| Leven | 72,392 | 42,783 | 7,602 | 10.5% |
| Little Forester | 35,283 | 19,382 | 2,909 | 8.2% |
| Little Swanport | 88,581 | 64,903 | 1,299 | 12.7% |
| Lower Derwent | 160,863 | 78,390 | 7,135 | 4.4% |
| Macquarie | 273,669 | 240,632 | 531 | 0.2% |
| Meander | 157,657 | 114,222 | 7,671 | 4.9% |
| Mersey | 191,600 | 76,806 | 7,922 | 4.1% |
| Montagu | 58,187 | 28,254 | 1,816 | 3.1% |
| Musselroe-Ansons | 99,380 | 43,120 | 674 | 0.7% |
| Nelson Bay | 86,242 | 1,760 | 811 | 0.9% |
| North Esk | 106,387 | 61,003 | 7,695 | 7.2% |
| Ouse | 150,091 | 104,908 | 1,229 | 0.8% |
| Pieman | 415,878 | 12,381 | 1,217 | 0.3% |
| Pipers | 75,239 | 46,046 | 3,747 | 5.0% |
| Pitt Water-Coal | 97,017 | 82,663 | 1,340 | 1.4% |
| Prosser | 115,538 | 71,220 | 3,587 | 3.1% |
| Ringarooma | 97,365 | 34,721 | 3,987 | 4.1% |
| Rubicon | 73,148 | 45,799 | 3,696 | 5.1% |
| Scamander-Douglas | 70,709 | 17,034 | 26 | 0.1% |
| South Esk | 334,499 | 185,326 | 5,818 | 1.7% |
| Swan-Apsley | 142,897 | 61,913 | 487 | 0.3% |
| Tamar Estuary | 117,422 | 88,721 | 4,106 | 3.5% |
| Tasman | 95,826 | 59,178 | 2,884 | 3.0% |
| Upper Derwent | 352,441 | 75,815 | 2,826 | 0.8% |
| Welcome | 66,224 | 42,784 | 2,157 | 3.3% |
| All catchments | 5,601,117 | 2,701,694 | 150,407 | 2.7% |

⁴The Cam and Emu catchments include large tracts of land owned since the 1930s by forestry companies.

Private Property Plantations in the Landscape in Tasmania as at 31 December 2006

HOW TO CONTACT US**LAUNCESTON**

PO Box 180
KINGS MEADOWS 7249
State Government Offices
167 Westbury Rd PROSPECT
Telephone: (03) 6336 5300
Facsimile: (03) 6336 5445

HOBART

78 Patrick St
HOBART 7000
Telephone: (03) 6233 7640
Facsimile: (03) 6233 7009

BURNIE

PO Box 68
BURNIE 7320
2-4 East Cam Rd
CAMDALE
Telephone: (03) 6434 7260
Facsimile: (03) 6434 6200

Email: admin@privateforests.tas.gov.au
Website: www.privateforests.tas.gov.au



Private Forests Tasmania's Mission is to facilitate the sustainable management of native and plantation forestry on private land in Tasmania.

This includes:

- encouraging commercial wood production;
- encouraging the use of trees in land management;
- promoting the environmental benefits of trees and forests;
- promoting opportunities for competitive markets;
- optimising returns for all parties.



Tasmania
Explore the possibilities